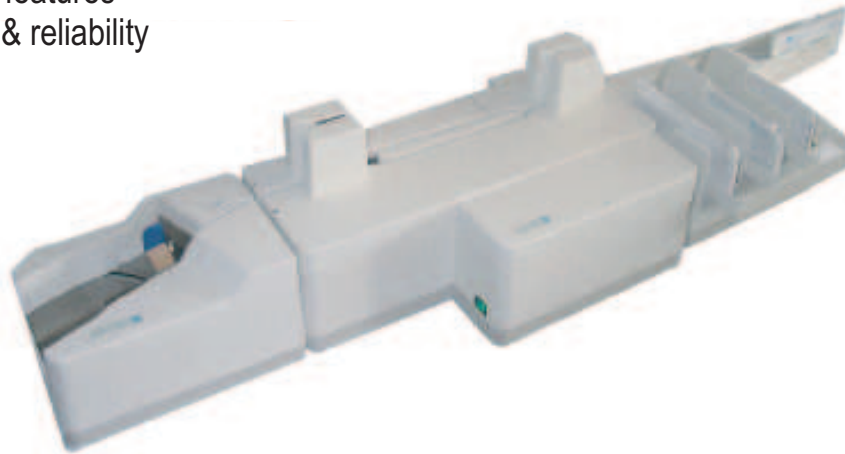


# LS 800



## DOCUMENT READER-SCANNER FOR BACK-OFFICE PROCESSING

- High capacity & Productivity (up to 200 doc/min.)
- Choice of features
- Flexibility & reliability



The LS 800 is able to read MICR (CMC7/E13B) codelines, (OCR codelines and Barcode are decoded via software on the host) scan both sides of the document, 16/256 shades of grey, 100/200 dpi.

Optional modules can increase the performance and flexibility of the reader-scanner, turning it into a ideal back-office item processing system. They include an automatic document feeder and up to three 3-bin sorter modules for max. Total of 10 sorting bins (3x3 + reject bin).

Optional functions include printing by high professional, ink-jet on rear side of the document before back scanning. Connection to the system is by USB 2.0.

### BASIC UNIT

- Automatic document feeding up to 500 documents capacity, with double feeding detection
- Front & Back imaging camera
- 16 or 256 gray scale at 100 or 200 d.p.i.
- Up to 9+1 collecting bins for processed documents up to 300 documents for each bin
- Collecting bin-full sensors

### OPTIONS

- MICR CMC7/E13B read head
- Intelligent sorting based on codeline (sorting parameters can be downloaded on the unit)
- One line rear ink-jet printhead

### DOCUMENT SPECIFICATIONS

- Length: 150-225 mm.
- Height: 60-108 mm. for scanning [image height: max 108 mm.; the unit is able to handle higher sized documents]
- Image resolution: 100 or 200 DPI, with 16 or 256 shades of gray.
- Thickness: 0.07-0.12 mm.
- Weight: 70-120 gr./sqm

### PAPER HANDLING

- Transport speed: 800 mm./sec.
- Throughput: up to 200 docs./min.

#### HOST CONNECTIONS

USB 2.0 interface

#### POWER SUPPLY

Mains & power: 100/240 V AC  
120 W, 50-60 Hz  
ON/OFF switch on the reader

#### DIMENSIONS AND WEIGHT

Dimensions:  
Length: 830-1680 mm  
Width: 240 mm  
Height: 200 mm

#### ENVIRONMENTAL CONDITIONS

Operating conditions: 10+40°C, 20+80% R.H.  
Storage: 0+55°C, 5+95%  
Transport: -15+55°C, 5+95%  
RH: (20H max)

#### HOMOLOGATIONS & MARKS

Compliance: CE (UL CSA on request)  
Safety: EN 60950

#### NOISE LEVEL

< 52 db



La diferencia en servicios tecnológicos

Centro de Servicio al Cliente  
PBX : (593 2) 227 2544  
Of. Regional Guayaquil  
Telefs: (593 9) 603 6686  
e-mail: [csc@decision.com.ec](mailto:csc@decision.com.ec)

Av. Amazonas N35-89 y Juan Pablo Sanz  
Ed. Amazonas 4000, Piso 2  
Telefs: (593 2) 226 2550 / 224 5507  
e-mail: [contactenos@decision.com.ec](mailto:contactenos@decision.com.ec)  
Quito - Ecuador

[www.decision.com.ec](http://www.decision.com.ec)